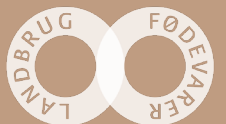


# Work accidents in dairy farming

**SEGES**

**Promille**afgiftsfonden for landbrug

STØTTET AF



# How to steer clear of accidents at work

Mr. Sjoerd Ydema, owner of Fårup Overgaard

Mrs. Marianne Norup, health and safety consultant, SEGES

**SEGES**

**Promille**afgiftsfonden for landbrug

STØTTET AF



# WORK ACCIDENTS CAN HAPPEN ANYWHERE BUT THEY ARE NEVER JUST "BAD LUCK"

- What causes an accident?

More factors

occurring at the same time

NOT

"Bad luck" or "stupidity"

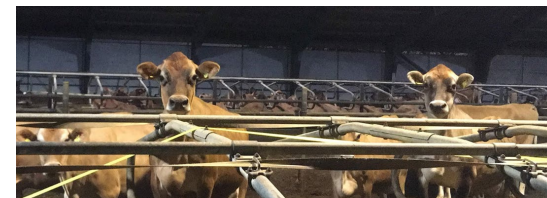
**CATCH THE DAILY SITUATIONS  
– AND YOU WILL STEAR CLEAR OF SERIOUS ACCIDENTS!**

**SEGES**



# Typical accidents in dairy farming

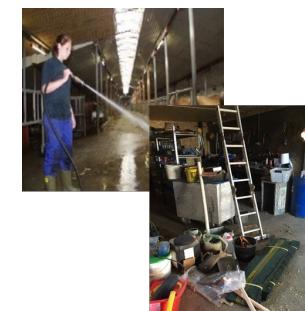
- Handling of animals – getting squeezed, kicked, trampled or gored



- Machine injuries, e.g. the skid steer loader



- Falling from heights – falling from the stack, from climbing on bars or ladders

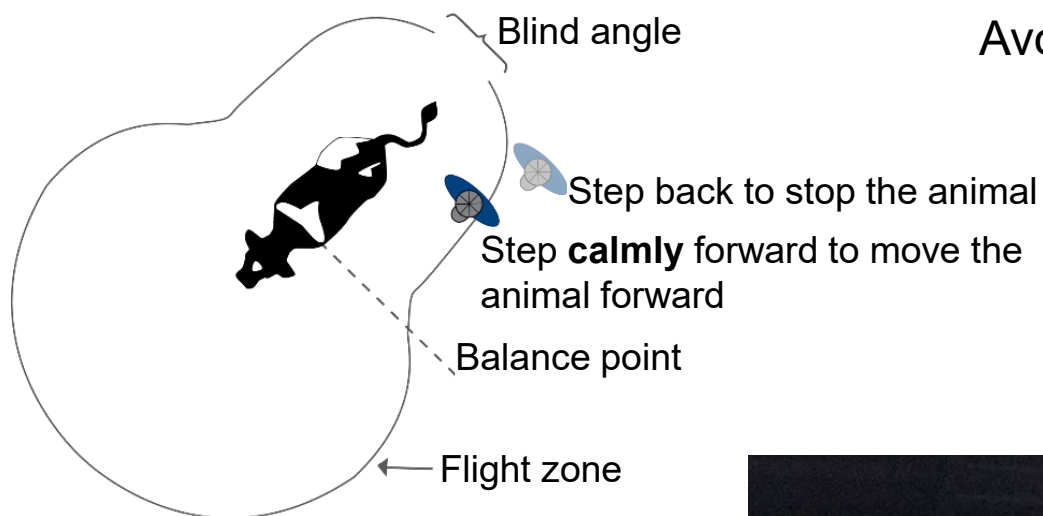


- Slips, trips and falls – slippery floors, edges and stairs, manure, broken equipment

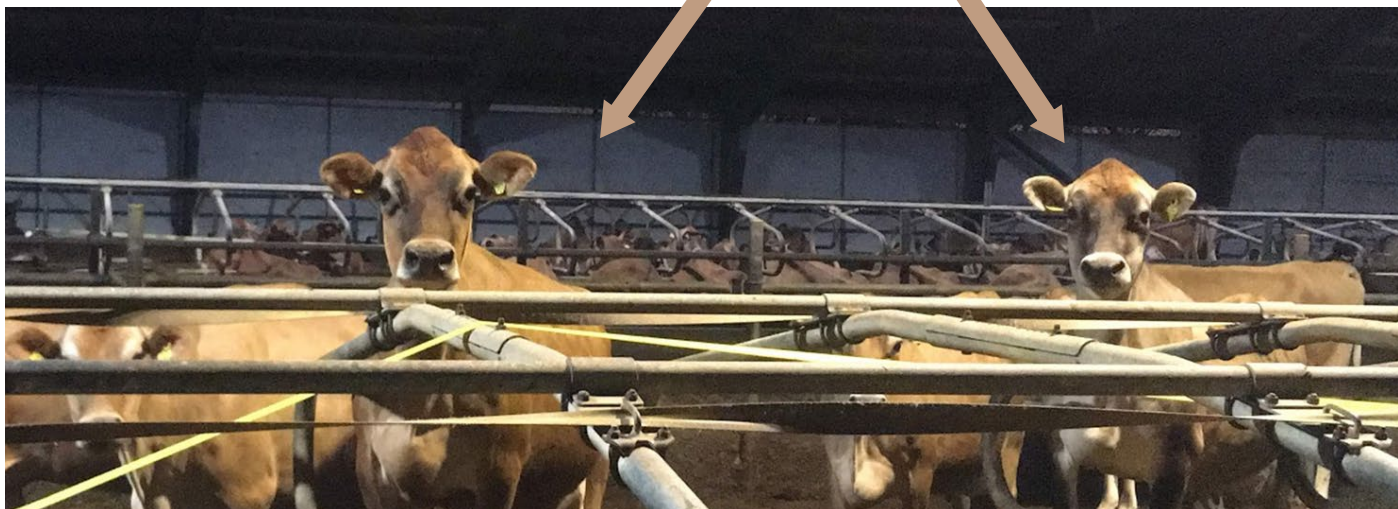
# Animal handling

## STRESSED PEOPLE MAKE THE ANIMALS STRESSED

We must work in a calm way in the barns.  
Avoid loud noises, yelling and fast walking.



Eyes and ears tell if you have the cows' attention.  
The head held high tells of being alert to an unknown sound/object/person.



**ASK FOR TRAINING IF YOU HAVE  
LITTLE EXPERIENCE WITH ANIMALS!**

**The force within animals can be lethal!**

**SEGES**

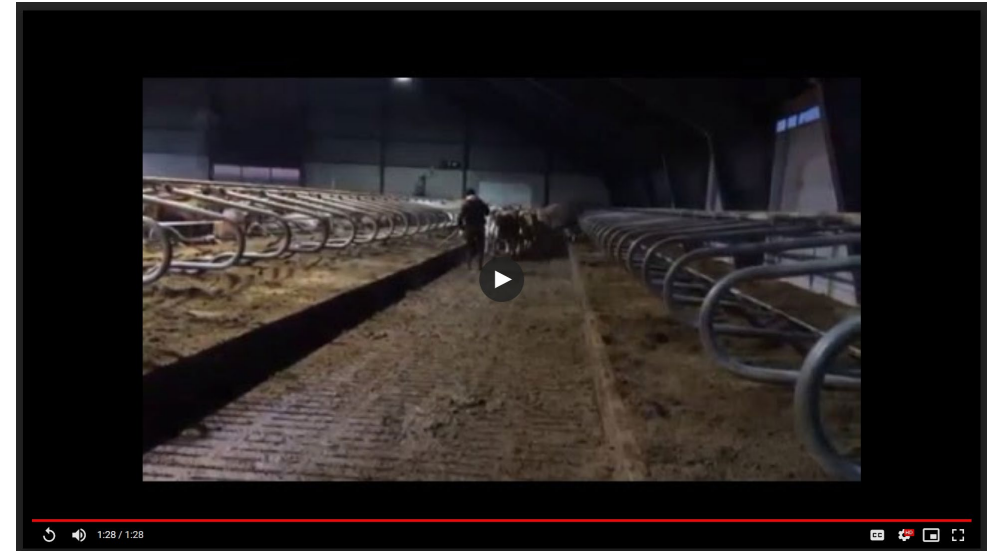


# A case of excellent low stress handling

Short movie from a typical Danish dairy farm

Too slow, a waste of time? Inefficient?

- These 87 cows are giving about 100 kilograms more milk than when a colleague is doing the job.

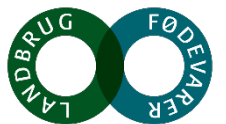


Safety **and** productivity increase at the same time!

# Avoid kicking during milking



**SEGES**



# Falling off the silo stack



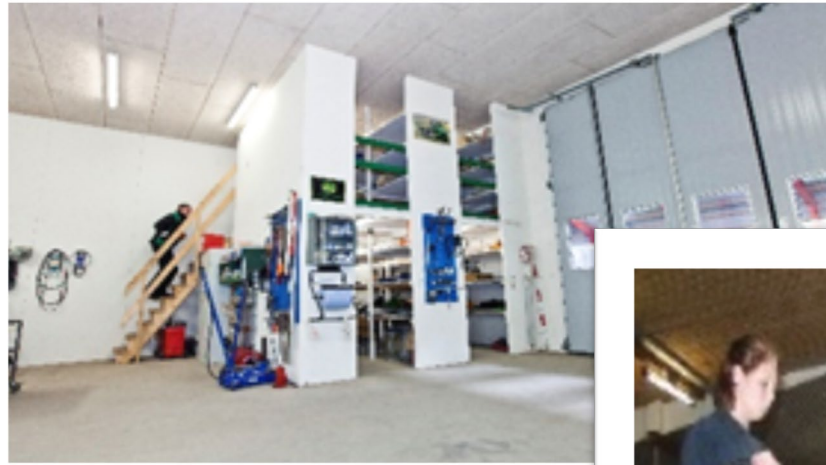
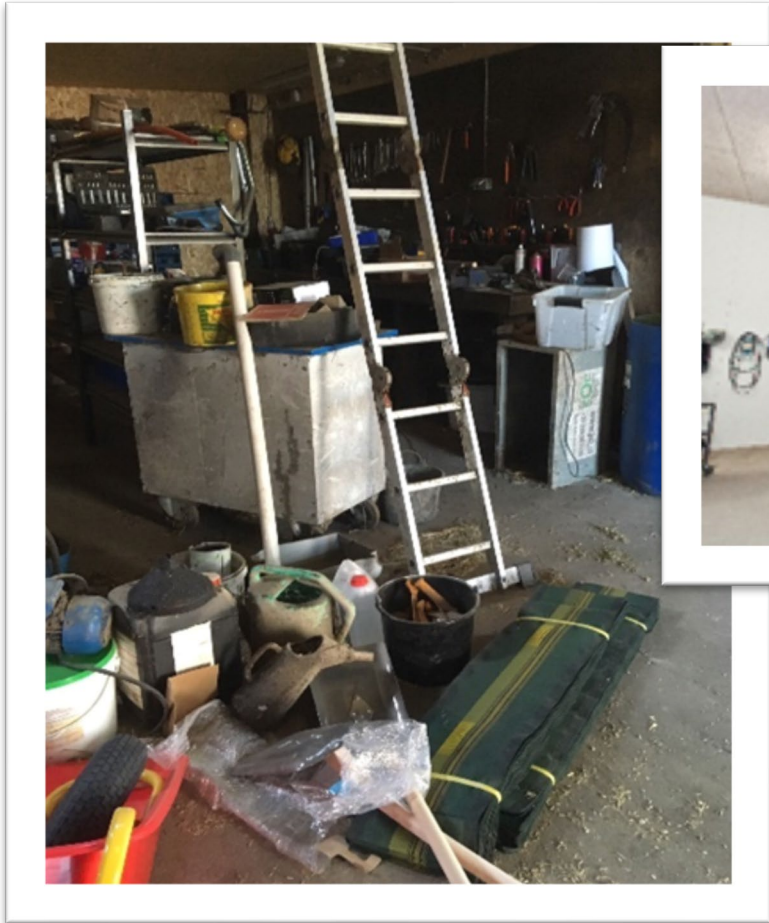
**SEGES**



# Unsafe driving of the skid steer loader



# A simple mess is often a risk of injury



# Key takeaways

- ASK and ask again, if you do not understand it
- Tell your manager if something is broken or run out
- Everyday situations tell you of the risks of serious accidents

